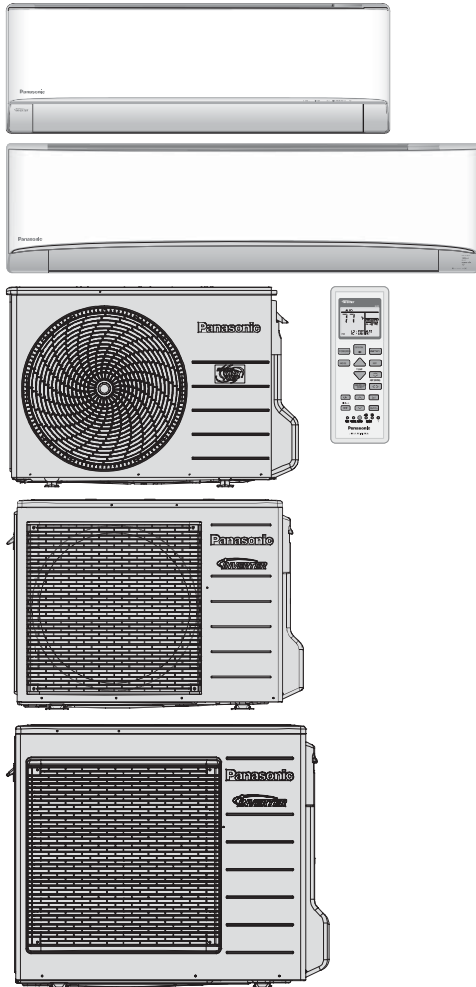


PARTS LIST

Air Conditioner

Indoor Unit
CS-XE18WKUAW
CS-XE24WKUAW


Destination
U.S.A.
Canada



WARNING

This service information is designed for experienced repair technicians only and is not designed for use by the general public. It does not contain warnings or cautions to advise non-technical individuals of potential dangers in attempting to service a product. Products powered by electricity should be serviced or repaired only by experienced professional technicians. Any attempt to service or repair the products dealt with in this service information by anyone else could result in serious injury or death.

IMPORTANT SAFETY NOTICE

There are special components used in this equipment which are important for safety. These parts are marked by  in the Schematic Diagrams, Circuit Board Diagrams, Exploded Views and Replacement Parts List. It is essential that these critical parts should be replaced with manufacturer's specified parts to prevent shock, fire or other hazards. Do not modify the original design without permission of manufacturer.

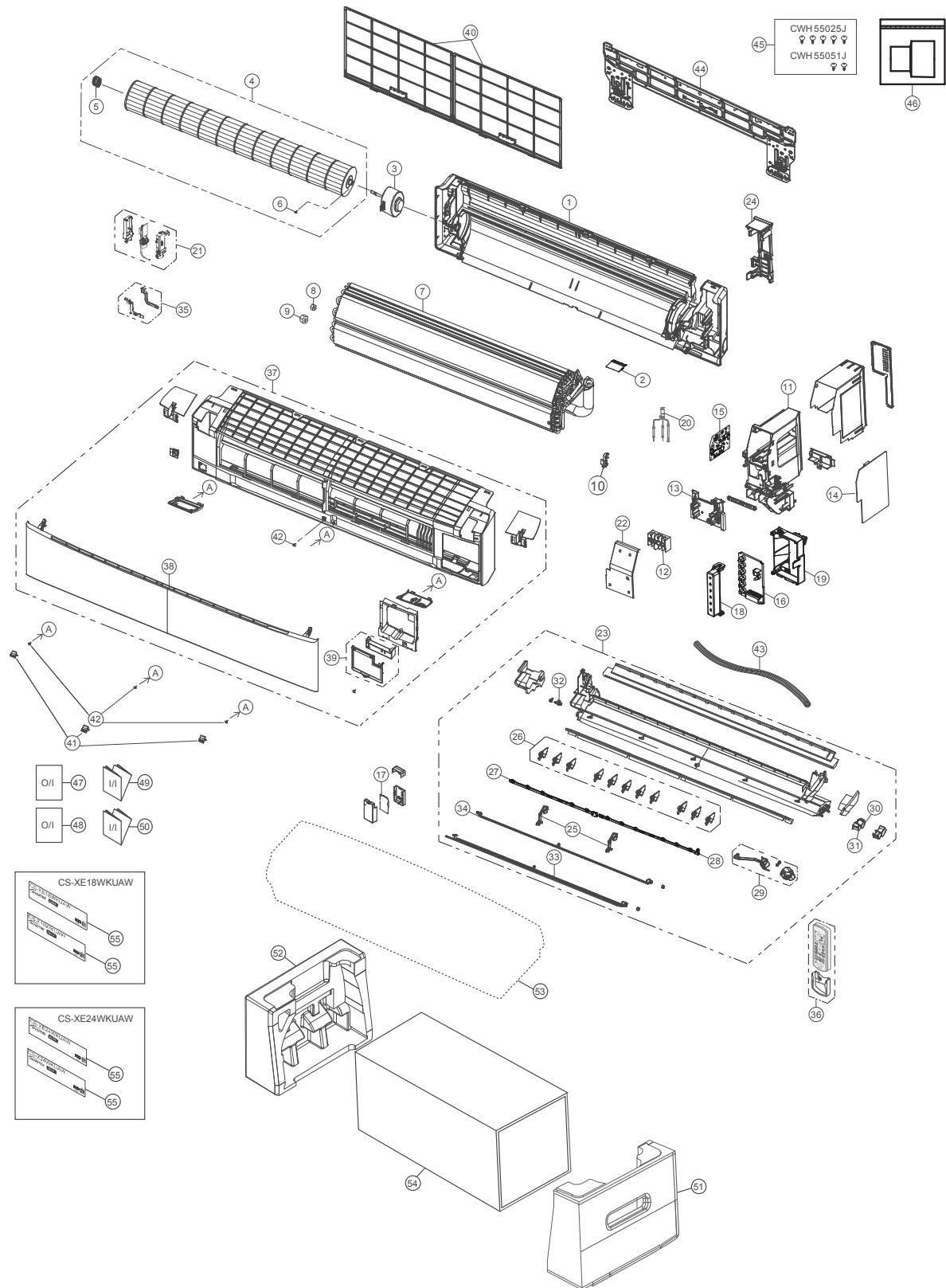
PRECAUTION OF LOW TEMPERATURE

In order to avoid frostbite, be assured of no refrigerant leakage during the installation or repairing of refrigerant circuit.

Panasonic[®]

© Panasonic Corporation 2020.

20.1.2 CS-XE18WKUAW CS-XE24WKUAW



Note

The above exploded view is for the purpose of parts disassembly and replacement.
The non-numbered parts are not kept as standard service parts.

SAFETY PARTS	REF. NO.	PART NAME & DESCRIPTION	QTY.	CS-XE18WKUAW	CS-XE24WKUAW	REMARKS
	1	CHASSIS COMPLETE	1	ACXD50C01591	←	
	2	PARTICULAR PIECE	1	ACXD93-10020	←	
⚠	3	FAN MOTOR	1	L6CBYYL0335	←	O
	4	CROSS-FLOW FAN COMPLETE	1	CWH02C1136	←	
	5	BEARING ASSY	1	CWH64K1010	←	
	6	SCREW - CROSS-FLOW FAN	1	CWH551146	←	
	7	EVAPORATOR	1	ACXB30C30900	ACXB30C30250	
	8	FLARE NUT (LIQUID)	1	CWT251030	←	
	9	FLARE NUT (GAS)	1	CWT251032	CWT251033	
	10	CLIP FOR SENSOR	1	CWH32142	←	
	11	CONTROL BOARD CASING	1	ACXH10-08120A	←	
⚠	12	TERMINAL BOARD COMPLETE	1	CWA28C2357	←	O
	13	PARTICULAR PIECE - TERMINAL	1	CWD933137A	←	
⚠	14	ELECTRONIC CONTROLLER - MAIN	1	ACXA73C59720	ACXA73C59760	O
⚠	15	ELECTRONIC CONTROLLER - SUB	1	ACXA73-31220	←	O
⚠	16	ELECTRONIC CONTROLLER-INDICATOR	1	ACXA73-33110	←	O
⚠	17	ELECTRONIC CONTROLLER- WIFI	1	ACXA73-35190	←	O
	18	INDICATOR HOLDER	1	ACXD93-01960	←	
	19	INDICATOR HOLDER	1	ACXD93-01970	←	
⚠	20	SENSOR COMPLETE	1	CWA50C3228	←	O
⚠	21	GENERATOR COMPLETE	1	ACXH94C01110	←	O
	22	CONTROL BOARD FRONT COVER CO.	1	ACXH13C05650	←	
	23	DISCHARGE GRILLE COMPLETE	1	ACXE20C05480	←	
	24	BACK COVER CHASSIS	1	ACXD93-10180	←	
	25	FULCRUM	2	ACXH62-00080	←	
	26	VERTICAL VANE	11	ACXE24-00400	←	
	27	CONNECTING BAR (L)	1	ACXE26-00190	←	
	28	CONNECTING BAR (R)	1	ACXE26-00200	←	
⚠	29	AIR SWING MOTOR ASS'Y	1	ACXA98K00030	←	O
⚠	30	AIR SWING MOTOR (BIG H.VANE)	1	ACXA98-02000	←	O
⚠	31	AIR SWING MOTOR (SMALL H.VANE)	1	ACXA98-01990	←	O
	32	CAP - DRAIN TRAY	1	CWH521259	←	
	33	HORIZONTAL VANE CO.(BIG)	1	ACXE24C01031	←	
	34	HORIZONTAL VANE CO.(SMALL)	1	ACXE24C00540	←	
	35	DUCT-COMPLETE	1	ACXD22C00240	←	
⚠	36	REMOTE CONTROL COMPLETE	1	ACXA75C17890	←	O
	37	FRONT GRILLE COMPLETE	1	ACXE10C11230	←	
	38	INTAKE GRILLE COMPLETE	1	ACXE22C00870	←	
	39	GRILLE DOOR COMPLETE	1	ACXE14C01330	←	
	40	AIR FILTER	2	ACXD00-00250	←	
	41	CAP-FRONT GRILLE	3	ACXH52-00100	←	
	42	SCREW - FRONT GRILLE	4	XTT4+16CFJ	←	
	43	DRAIN HOSE	1	ACXH85-00210	←	
	44	INSTALLATION PLATE	1	ACXH36-00080	←	
	45	BAG COMPLETE - INSTALLATION SCREW	1	CWH82C1705	←	
	46	BAG COMPLETE (TUBE CONNECTOR)	1	CWH82C2030	←	
	47	OPERATING INSTRUCTION	1	ACXF55-27201	←	

SAFETY PARTS	REF. NO.	PART NAME & DESCRIPTION	QTY.	CS-XE18WKUAW	CS-XE24WKUAW	REMARKS
	48	OPERATING INSTRUCTION	1	ACXF55-27121	←	
	49	INSTALLATION INSTRUCTION	1	ACXF60-39140	←	
	50	INSTALLATION INSTRUCTION	1	ACXF60-39150	←	
	51	SHOCK ABSORBER - RIGHT	1	ACXG70-01220	←	
	52	SHOCK ABSORBER - LEFT	1	ACXG70-01230	←	
	53	BAG	1	ACXG86-00130	←	
	54	C.C.CASE	1	ACXG50-55920	←	
	55	MODEL LABEL	2	ACXF85-34310	ACXF85-34320	

(NOTE)

- All parts are supplied from PAPAMY, Malaysia (Vendor Code: 00029488).
- “O” marked parts are recommended to be kept in stock.