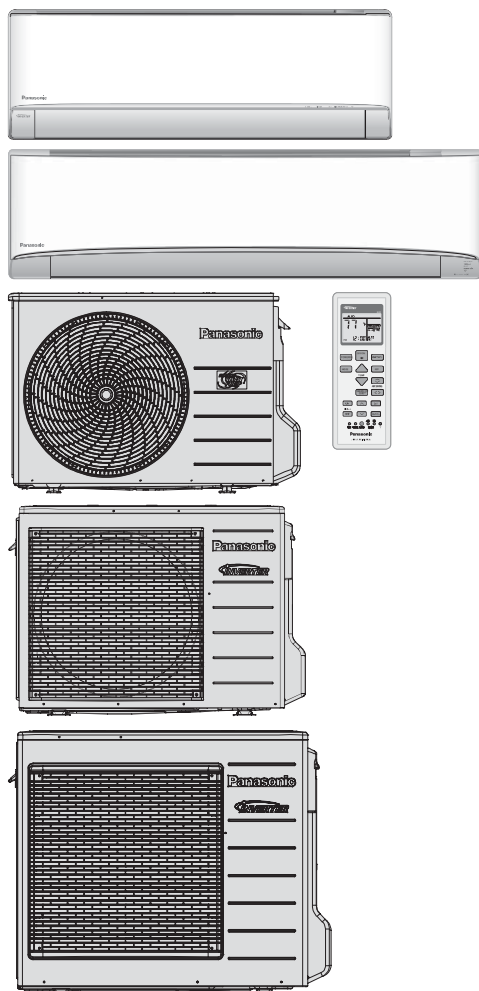


PARTS LIST

Air Conditioner

Outdoor Unit
CU-XE9WKUA
CU-XE12WKUA


Destination
U.S.A.
Canada



WARNING

This service information is designed for experienced repair technicians only and is not designed for use by the general public. It does not contain warnings or cautions to advise non-technical individuals of potential dangers in attempting to service a product. Products powered by electricity should be serviced or repaired only by experienced professional technicians. Any attempt to service or repair the products dealt with in this service information by anyone else could result in serious injury or death.

IMPORTANT SAFETY NOTICE

There are special components used in this equipment which are important for safety. These parts are marked by  in the Schematic Diagrams, Circuit Board Diagrams, Exploded Views and Replacement Parts List. It is essential that these critical parts should be replaced with manufacturer's specified parts to prevent shock, fire or other hazards. Do not modify the original design without permission of manufacturer.

PRECAUTION OF LOW TEMPERATURE

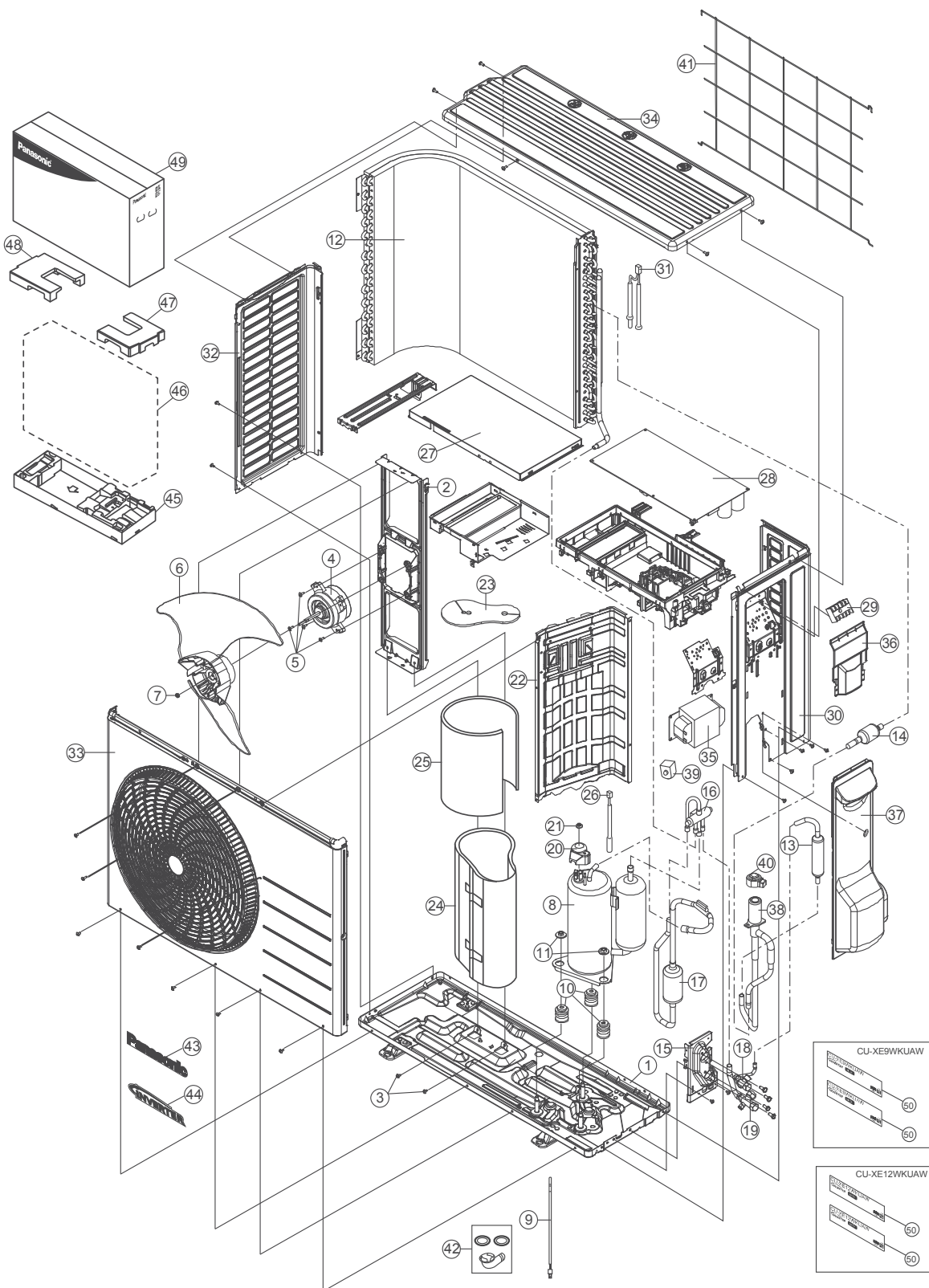
In order to avoid frostbite, be assured of no refrigerant leakage during the installation or repairing of refrigerant circuit.

Panasonic[®]

© Panasonic Corporation 2020.

20.2 Outdoor Unit

20.2.1 CU-XE9WKUA CU-XE12WKUA



Note

The above exploded view is for the purpose of parts disassembly and replacement.
The non-numbered parts are not kept as standard service parts.

SAFETY PARTS	REF. NO.	PART NAME & DESCRIPTION	QTY.	CU-XE9WKUA	CU-XE12WKUA	REMARK
	1	CHASSIS COMPLETE	1	ACXD52K03400A	←	
	2	FAN MOTOR BRACKET	1	CWD541167	←	
	3	SCREW - FAN MOTOR BRACKET	2	CWH551217	←	
⚠	4	FAN MOTOR	1	L6CAYYYL0133	←	O
	5	SCREW - FAN MOTOR MOUNT	4	CWH55252J	←	
	6	PROPELLER FAN ASSY	1	CWH03K1066	←	
	7	NUT - PROPELLER FAN	1	CWH56053J	←	
⚠	8	COMPRESSOR	1	5RS102XTA21	←	O
	9	CRANKCASE HEATER	1	CWA341072	←	
	10	ANTI - VIBRATION BUSHING	3	CWH50077	←	
	11	NUT - COMPRESSOR MOUNT	3	CWH561096	←	
	12	CONDENSER	1	ACXB32C19720	←	
	13	DISCHARGE MUFFLER(EXP VALVE)	1	CWB121021	←	
	14	STRAINER	1	CWB111061	←	
	15	HOLDER COUPLING	1	CWH351231A	←	
	16	4-WAYS VALVE	1	CWB001058	←	
	17	DISCHARGE MUFFLER(4 W.VALVE)	1	CWB121047	←	
	18	2-WAYS VALVE (LIQUID)	1	CWB021654	←	
	19	3-WAY VALVE (GAS)	1	CWB011374	CWB011344	
	20	TERMINAL COVER	1	CWH171039A	←	
	21	NUT - TERMINAL COVER	1	CWH7080300J	←	
	22	SOUND PROOF BOARD	1	CWH151273	←	
	23	SOUND PROOF MATERIAL - COMP. TOP	1	CWG302719	←	
	24	SOUND PROOF MATERIAL - COMP. BODY	1	ACXG30-10570	←	
	25	SOUND PROOF MATERIAL	1	ACXG30-08500	←	
⚠	26	SENSOR CO-COMP TEMP	1	ACXA50C15830	←	O
	27	CONTROL BOARD COVER-TOP	1	CWH131473	←	
⚠	28	ELECTRONIC CONTROLLER - MAIN	1	ACXA73C61380R	ACXA73C61390R	O
⚠	29	TERMINAL BOARD ASSY	1	CWA28K1154	←	O
	30	CABINET SIDE PLATE CO. - RIGHT	1	ACXE04C06820	←	
⚠	31	SENSOR CO-AIR TEMP AND PIPE TEMP	1	ACXA50C15840	←	O
	32	CABINET SIDE PLATE - LEFT	1	ACXE04-11650A	←	
	33	CABINET FRONT PLATE CO.	1	ACXE06C03770	←	
	34	CABINET TOP PLATE	1	ACXE03-04400A	←	
⚠	35	REACTOR	1	G0C392J00039	←	O
	36	CONTROL BOARD COVER	1	CWH131470	←	
	37	CONTROL BOARD COVER-COMPLETE	1	ACXH13C05720	←	
	38	EXPANSION VALVE	1	ACXB05-00400	←	
⚠	39	V-COIL COMPLETE (4 WAY VALVE)	1	ACXA43C00270	←	O
⚠	40	V-COIL COMPLETE (EXPENSION VALVE)	1	ACXA43C01520	←	O
	41	WIRE NET	1	CWD041200A	←	
	42	BAG-COMPLETE (L-TUBE)	1	ACXH82C00350	←	
	43	BADGE -PANASONIC	1	CWE373439	←	
	44	BADGE -INVERTER	1	CWE373441	←	
	45	BASE BOARD-COMPLETE	1	CWG62C1162	←	
	46	BAG	1	ACXG86-03760	←	
	47	SHOCK ABSORBER (R)	1	CWG713415	←	

SAFETY PARTS	REF. NO.	PART NAME & DESCRIPTION	QTY.	CU-XE9WKUA	CU-XE12WKUA	REMARK
	48	SHOCK ABSORBER (L)	1	CWG713416	←	
	49	C.C.CASE	1	ACXG50-48900	←	
	50	MODEL LABEL	2	ACXF85-26660	ACXF85-26670	

(NOTE)

- All parts are supplied from PAPAMY, Malaysia (Vendor Code: 00029488).
- “O” marked parts are recommended to be kept in stock.